

# Optalign 2D

## More Active Ingredients On Target

Optalign 2D is an Enlist<sup>®</sup>, Engenia<sup>®</sup> and Xtendimax<sup>®\*</sup> approved multi-purpose adjuvant. It minimizes drift, and improves deposition and spreading of spray droplets on the leaf.



### RECOMMENDED CROPS

Corn, soybeans, wheat, edible beans, grain sorghum, sugar beets, potatoes and alfalfa

### FEATURES & BENEFITS

- Low use rate and labeled for a broad range of herbicides, fungicides and insecticides
- Approved for use with Enlist<sup>®</sup>, Engenia<sup>®</sup> and Xtendimax<sup>®\*</sup> technologies
- Reduces fines and the negative effects associated with off target drift
- Provides more droplets in the desired diameter
- Enables delivery of more active ingredients to the plant canopy and consistently improves leaf coverage
- Increased control of target pest(s)

### DIRECTIONS FOR USE

Always follow label instructions.

**Use Rate:** For use with herbicides, insecticides and fungicides.

- 3-6 oz. per acre in 5-20 GPA applications
- 6-8 oz. per acre in 20-40 GPA applications
- 8-10 oz. per acre in 40-60 GPA applications

**Other Considerations:**

- Approved for ground and aerial application

**Storage:** Store in a closed, dry area and in original container and keep sealed. Avoid freezing.

**Packaging:**

- 2x2.5 gallon jugs
- 250-gallon totes

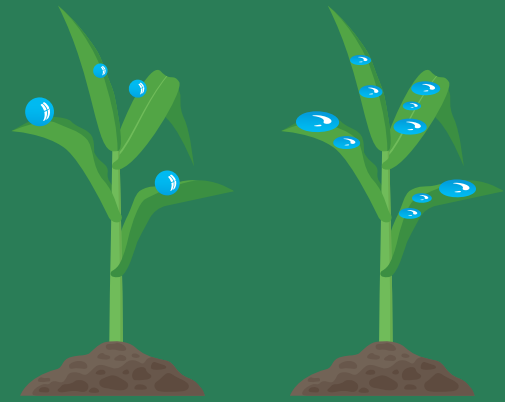
### ACTIVE INGREDIENTS

Methylated soybean oil and proprietary surfactant blend.....100%

*All ingredients are exempt from the requirement of a tolerance in 40 CFR 180.*

**Surfactant content: 18%**

Decrease driftable fines by 25% and create the perfect droplet size for optimal coverage.



\* Pending approval